

## VueSign CMS

### Managed Content on Demand



### Highlights

- Complete CMS solution for VoD, live streaming and digital signage
- Cost-effective solution for retail, enterprise and education applications
- Simple web-based UI to manage VoD playlist and digital signage layouts
- Quick switch between VoD and digital signage modes through VueSign CMS receive management
- Scalable and reliable system to fulfill the needs of various applications with different scopes

AVerMedia VueSign CMS (Content Management System) is a complete solution for Video on Demand (VoD), live streaming, and digital signage applications. With a superior total solution design; VoD, live broadcasting and digital signage content can be effortlessly managed by a delivery side, such as an organization or an enterprise.

The VueSign CMS can broadcast live video from AVerCaster HD Duet Plus (F239+) or AVerCaster Lite (SE510) to all AVerReceiver. Live-to-VoD can instantaneously add the archived video to the playlist for the audience to select afterwards. The AVerReceiver series can easily acquire and display content from the video playlist provided by the VueSign CMS through a network.

For digital signage usage, all multimedia content can be edited on the VueSign CMS and delivered to each receiver by a simple WebUI. Each receiver can display the content organized by VueSign CMS on both on-line and off-line modes.

From small retails to large corporates, BM series empowers VueSign CMS to fulfill all needs in a cost effective way. With simple management and rich features, BM series offer an easy and scalable deployment of your comprehensive digital platform.

#### Leading Solution for VoD, Live Streaming, and Digital Signage

- A superior total solution, managing the overall content from the encoder side to the receiver side to avoid integration efforts
- One-time investment without additional license fee or monthly rental

#### Content Display on AVerReceiver Client Side

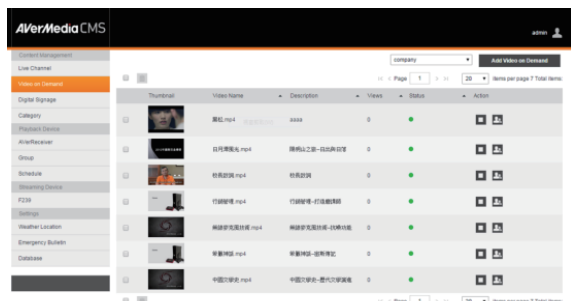
- Select and watch video from a VoD playlist or live streaming by a remote control
- On digital signage mode, automatically display multimedia content programmed by the VueSign CMS scheduling function
- Scheduling function allows to set one-time, daily, weekly, and monthly events on an individual or grouped AVerReceiver
- Display live streaming video from F239+ and SE510

#### Management on BM series

- Monitor and control all connected AVerReceivers by group management
- Deliver multimedia content for on-line service and export archived content for off-line usage
- Synchronize and upgrade AVerReceiver software with ease
- Push emergency message to all AVerReceivers simultaneously with just two clicks

## Live Channel and VoD Playlist

A live channel can be set up from the streaming encoders for all receivers to watch. A VoD playlist can be prepared for the clients to select as well. VueSign CMS manages all the video content from delivery to display on the WebUI in a simple way.



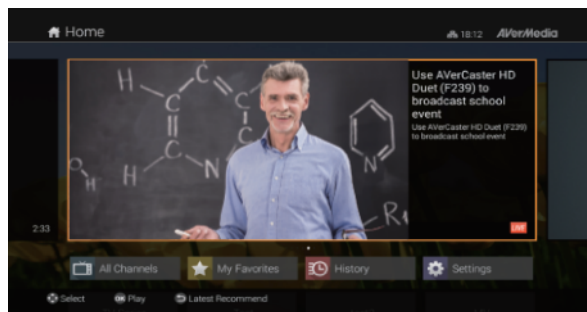
## Digital Signage

VueSign CMS features layout editing functions to make the most use of your digital signage platform. From ready-made templates to time stamping, scrolling ticker, RSS feeds to HTML and marquee functions, VueSign CMS enhances the ability to deliver digital signage content to meet all marketing and promotional needs.



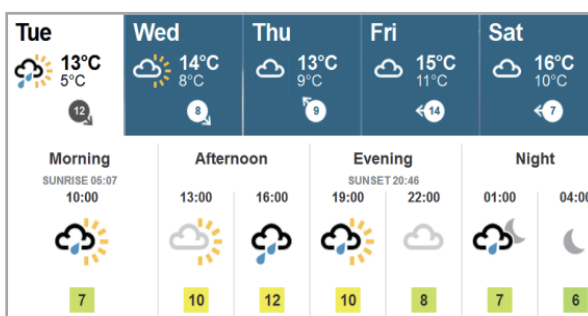
## VoD on AVerReceiver

With the remote controller, AVerReceiver can easily select and display video content from the VoD playlist provided by the VueSign CMS. Accessing live streaming from an encoder enriches the broadcast application in a VoD environment.

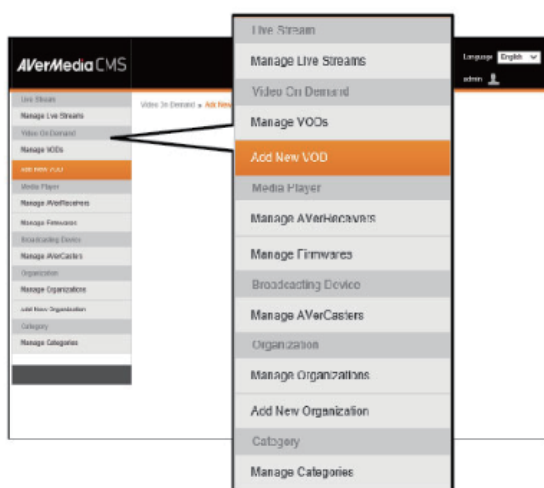


## RSS Feeds

RSS feed function means there is no excuse for lackluster content. For example, incorporate the weather RSS feed into the preset template to display the latest weather status. For any RSS feed, VueSign CMS continuously pushes updated information to the receiver environment.



## VueSign CMS Interface



### •Live Streams

Start or stop live broadcasts and manage the client authority to watch live videos

### •Video-on-Demand

Upload and manage videos on VueSign CMS and let clients watch them on AVerReceiver.

### •Organizations

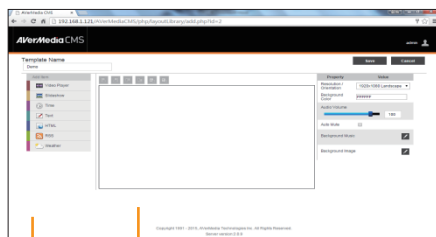
Categorize AVerReceiver into groups

### •Categories

Categorize videos by genres.

### •Media Players & Broadcasting Devices

Designate each AVerReceiver to an organization, and simultaneously administer broadcasts from multiple F239+ or SE510.



Layout space for editing

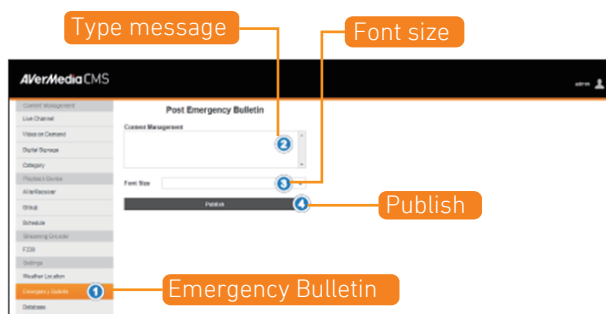
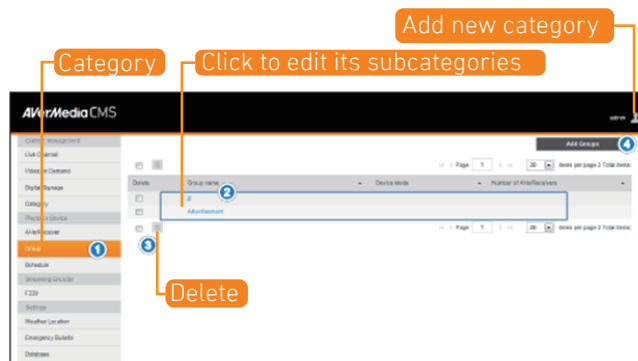
Configure items presented on the layout

## Digital Signage Layout Editing

- The intuitive WebUI design is simple and easy for editing layout and building templates
- Rich multimedia items to make the display astonishing

## Group Management

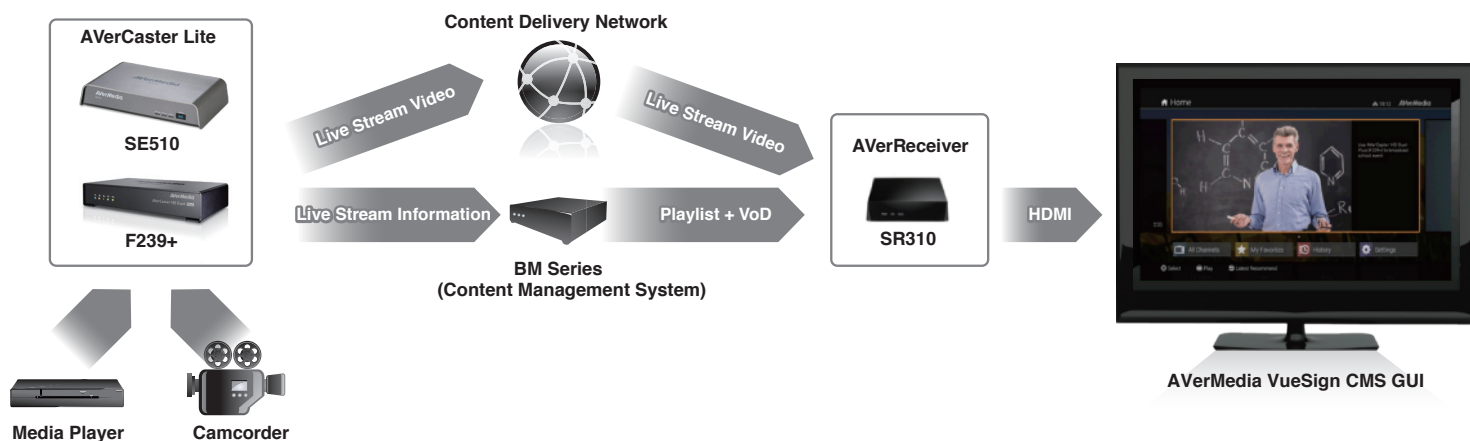
- Assign groups to the channels, videos, or devices.
- Manage the authority of video or channel to individual group to AVerReceiver of that group.
- Set up multiple groups to easily manage and control the viewing of all contents



## Quick Emergency Message Publication

- Just two clicks to activate and publish the emergency message
- The message can be published to a particular group or all groups

## Content Delivery Network



## Platform Specifications - VueSign CMS



Model Name		F239+	SE510
Input Signal		HDMI x 2 Component with RCA L/R audio x 2	HDMI x 1 Composite(CVBS) with RCA L/R audio
Media Format	Encoded Video	H.264 High/Main/Baseline profile Resolution 320 x 240 to 1920 x 1080 Frame Rate 25, 30, i50, i60 Bit rate 200Kbps ~ 15Mbps	H.264 High/Main/Baseline profile Resolution 320 x 240 to 1920 x 1080 Bit rate 500Kbps ~ 8Mbps
	Encoded Audio	AAC-LC mono/stereo Bit rate 64 ~ 512Kbps	AAC-LC mono/stereo Bit rate 64~512Kbps
Streaming Protocols		RTMP publish HLS push & pull mode UDP Multicast RTSP over UDP	RTMP publish HLS push & pull mode UDP Multicast RTSP over UDP
Ethernet		RJ45 port supporting 10/100Mbps links IPv4 Static/DHCP/Auto IP assignment	RJ45 port supporting 10/100Mbps links IPv4 Static/DHCP/Auto IP assignment
WiFi		N/A	802.11 a/b/g/n, 2.4G/5G Access point and client mode simultaneously
Dimensions (H x W x D)		230 x 124 x 42 mm / 8.9" x 5.2" x 1.69"	218 x 132 x 43 mm / 8.9" x 5.2" x 1.69"
Power		12V/1.5A: 18W Maximum	12V/1.5A: 18W Maximum
Environment	Operating Temperature	0 ~ 50°C (32~122°F)	0 ~ 50°C (32~122°F)
	Storage Temperature	-30 ~ 65°C (-22 ~ 149°F)	-30 ~ 65°C (-22 ~ 149°F)
	Humidity Tolerance	0 - 80% RHNC	0 - 80% RHNC



Model Name		BM110	BM510
Audio		1 x Line out	N/A
Front I/O Port		2 x USB 2.0 2 x COM	2 x USB 2.0
Rear I/O Port		2 x USB 3.0 2 X RJ45 1 x VGA 1 x HDMI 1 X Audio Line Out	1 x USB 2.0 1 x VGA 1 x PS2
Network		2 x RJ45 (Giga Lan)	2 x RJ45 (Giga Lan)
Storage Space		500 G	2T
Construction		Top cover-aluminum extrusion / Base-metal	SECC
Dimension (H x W x D)		39 x 200 x 134.5 mm 1.54" x 7.87" x 5.3"	44 x 430x 497 mm 1.73" x 16.9" x 19.6"
Power		AC 100 ~ 240V DC 9 ~ 36V	100V ~ 240V, 63 ~ 47 Hz, 4 ~ 2 A
Environment	Operating Temperature	0 ~ 50°C (32°F ~ 122°F)	0 ~ 50°C (32°F ~122°F)
	Storage Temperature	20 ~ 80°C (68°F ~ 176°F)	0 ~ 60°C (32°F ~140°F)
Certification		EMC : CE , FCC	EMC : CE , FCC Safety : RoHS , ErP

## Platform Specifications - AVerReceiver



Model Name		SR310
Video Resolution		1920 x 1080 (Landscape) and 1080 x 1920 (Portrait)
Ethernet		RJ45 10/100M Fast Ethernet
Media Format	Video format	H.264, MPEG-4
	Picture format	JPEG/ PNG
	Audio format	AAC ,MP3
Button & Ports	USB2.0	2 x Type A
	DC-in	1 x DC in Jack
	HDMI	1 x Standard TYPE-A HDMI 1.4b out
	Memory Card Slot	1 x SD Card Slot
Dimension (H x W x D)		124 x 105 x 30 mm 4.88" x 4.13" x 1.18"
Power		100 ~ 240 V AC, 50/60 Hz, DC output: 5V/ 2A
Environment	Operating Temperature	0 ~ 40°C (32°F~ 104°F)
	Storage Temperature	20 ~ 60°C (68°F~ 140°F)
	Humidity Tolerance	10% ~ 90%, non-condensing

\* All product specifications are subject to change without notice.